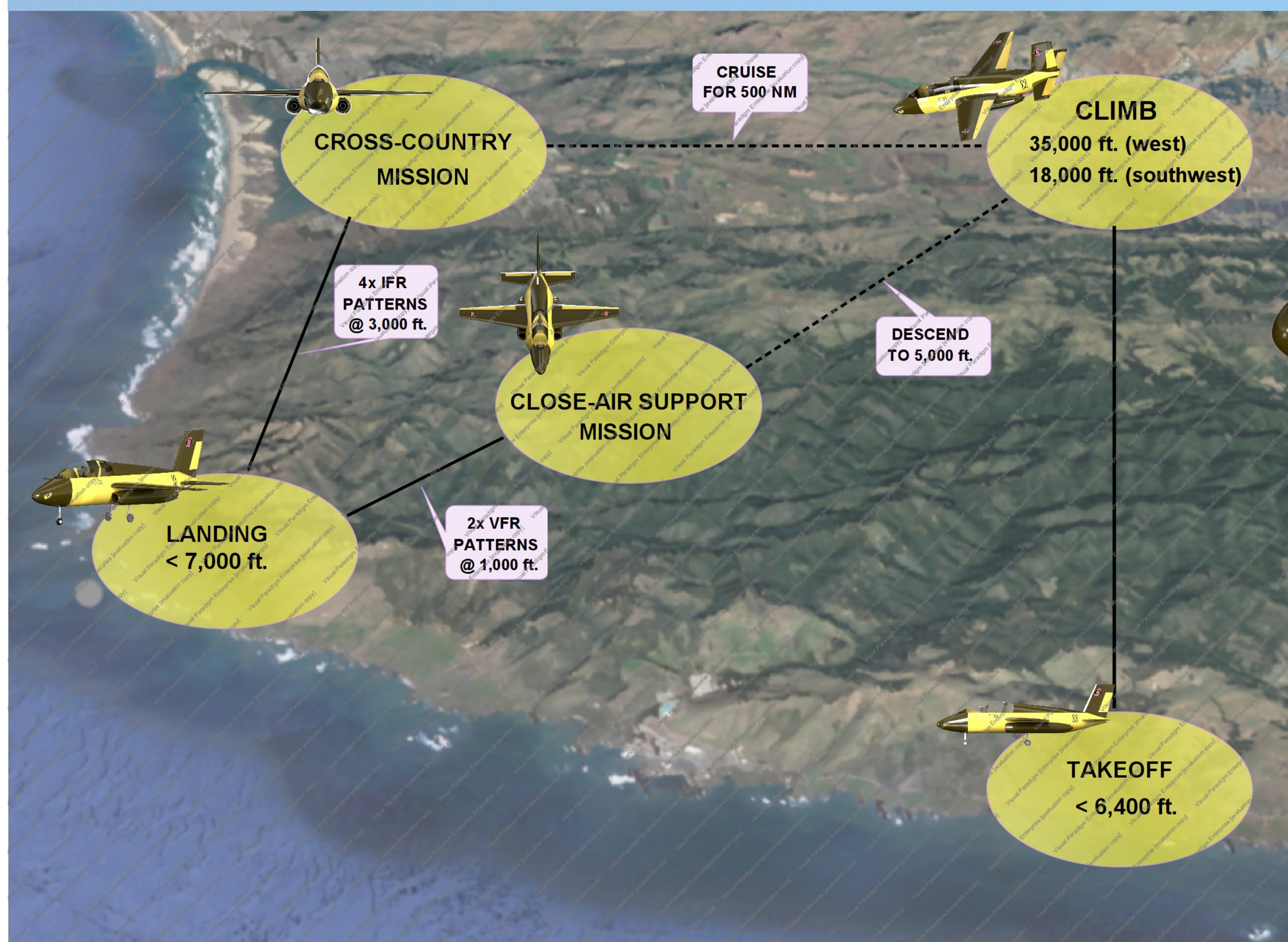


REQUEST FOR PROPOSAL

THE APT PROGRAM WILL REPLACE THE T-38C USED IN THE USAF'S SPECIALIZED UNDERGRADUATE PILOT TRAINING ADVANCED PHASE FIGHTER AND BOMBER TRACK, AND IN THE INTRODUCTION TO FIGHTER FUNDAMENTALS.

T-39 YELLOWJACKET
AN ADVANCED PILOT TRAINER



T-39 CHARACTERISTICS

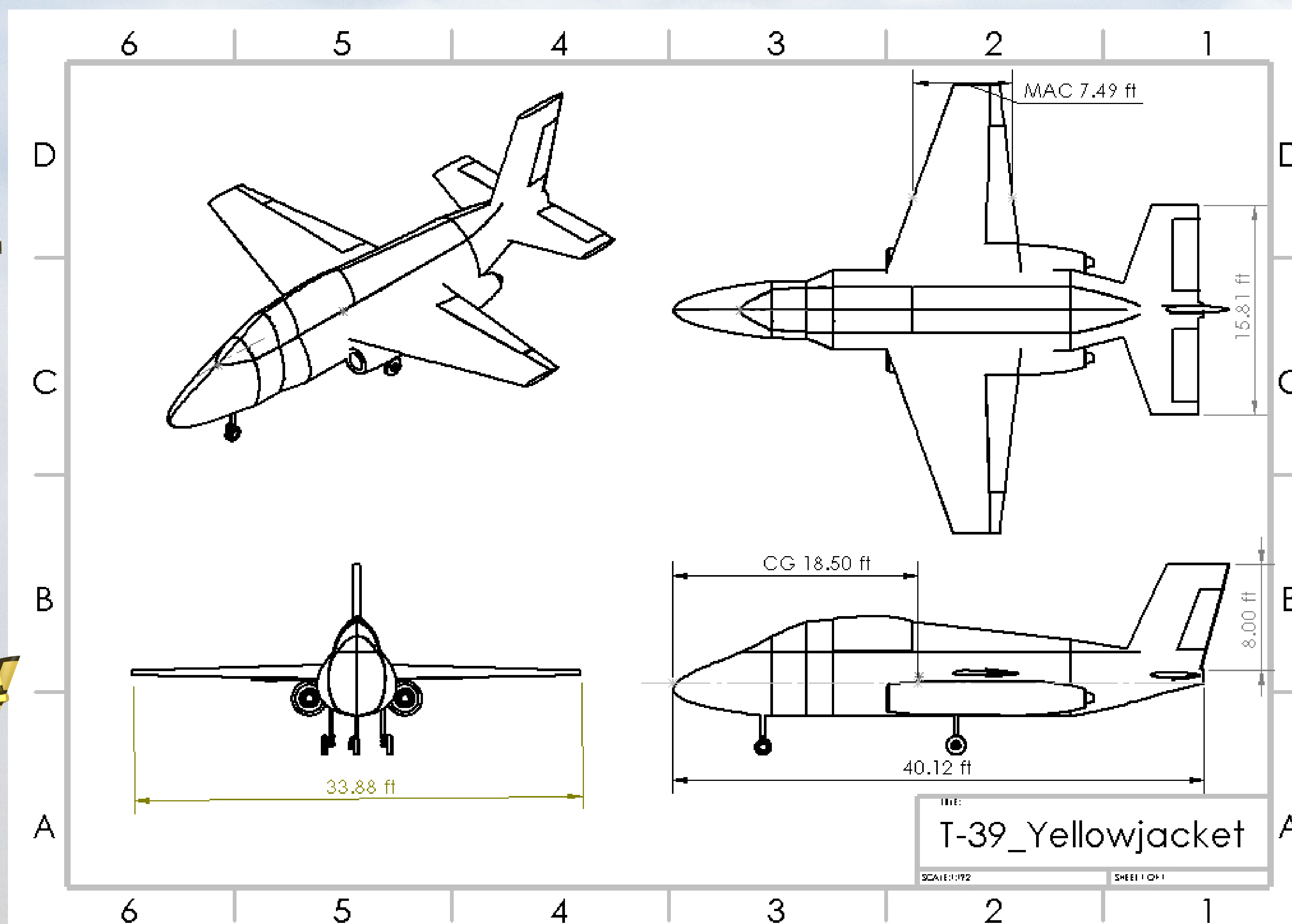
- ✦ Crew: 2
- ✦ Length: 40 ft. 2 in.
- ✦ Wingspan: 33 ft. 11 in.
- ✦ Height: 12 ft. 11 in.
- ✦ Wing area: 254.6 ft.²
- ✦ Empty weight: 10,057 lb.
- ✦ Maximum takeoff weight: 12,249 lb.
- ✦ Powerplant: 2x Aztec Electric F91-2A
- ✦ Power: 4,400 lbf.

CLOSE-AIR SUPPORT DESIGN MISSION

- ✦ Cruise @ 18,000 ft.
- ✦ Max. range
- ✦ Descend to 5,000 ft.
- ✦ x5 tac-sim weapon delivery
- ✦ x2 VFR patterns @ 1,000 ft.

CROSS-COUNTRY DESIGN MISSION

- ✦ 500 NM flight
- ✦ Cruise @ 35,000 ft.
- ✦ Max. range & max. speed
- ✦ x4 IFR patterns @ 3,000 ft.



T-39 PERFORMANCE

- ✦ Maximum speed: 553 kts
- ✦ Maximum cruise speed: 376 kts
- ✦ Maximum range: 900 NM
- ✦ Service ceiling: 40,300 ft.
- ✦ Rate of climb: 7,668.3 ft./min.
- ✦ Wing loading: 48.1 lb./ft.²
- ✦ Thrust/weight: 0.44